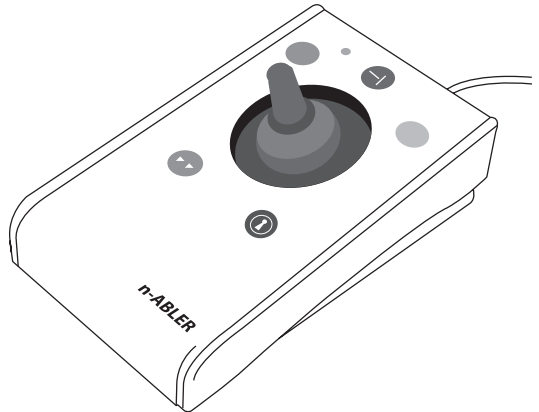


INSTRUCTIONS

n-Abler Joystick



Pack Contents

Carefully check the contents of the box, which are:

- n-ABLER unit
- USB to PS/2 adaptor plug
- T-Bar handle
- Soft Ball handle
- Instruction booklet

Product Description

n-ABLER is the most adaptable mouse alternative on the market and is specifically designed to address the needs of computer users with motor skills difficulties, poor hand-eye co-ordination or learning difficulties.

It is especially suitable for improving access for children and young people with some special educational needs, learning difficulties, for those whose work entails long periods of computer use and for older people and others with movement impairment.

The joystick requires only a light touch which, together with the function buttons, makes for

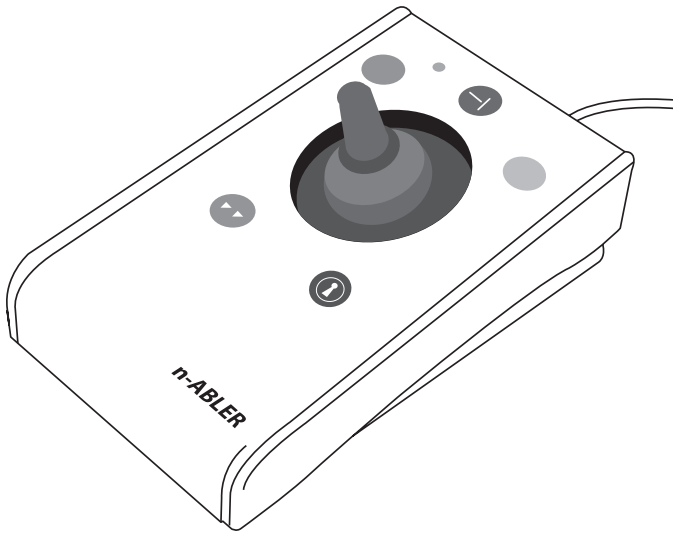
easy navigation, selection and manipulation of objects on the computer screen.

The 'n-ABLER' emulates a computer mouse but, with fingertip control and the need for only minimal hand movement, reduces wrist and elbow fatigue, requires far less effort and is less tiring.

The symmetrical design enables users to work with either hand without having to angle the wrist, and the unit can also be configured for 'left-handed' operation. Its large, integrated hand support/palm rest makes work posture more relaxed and less strained.

Features

- **Rugged construction and ergonomic design**
- **Large footprint for maximum stability**
- **Symmetrical design allowing use with either hand**
- **Integral wrist support to minimise fatigue**
- **Easy 'plug and play' installation
(no additional drivers required)**
- **Colour coded buttons mounted sub-flush to
prevent accidental activation**
- **Dwell Click function for users who cannot use buttons or switches**
- **Switchable left and right click buttons**
- **Double click and latching drag lock buttons**
- **X-Y axis and Scroll button for up/down or left/right
only cursor movements and scrolling facility**
- **Audible (switchable to mute) and visual warnings
indicating selection or change of function**
- **Cursor speed control**
- **Auto-detects between USB and PS/2 modes**
- **PC, Mac and Chromebook compatible**



Compatibility

The n-ABLER works with USB and PS/2 compatible computers. This includes the majority of Personal Computers (PCs), Apple Macintosh computers and Chromebooks. PS/2 sockets are circular with 6 pins, whereas USB connectors are rectangular with 4 pins.

Installation

USB (Preferred connection method)

Having located an available USB socket, simply plug your n-ABLER into it. It doesn't matter whether the computer is on or off. The first time you install n-ABLER the operating system may take a few seconds to build a driver. Your n-ABLER is available for use as soon as its green LED lights. There are no driver files to load onto the computer- the computer's resident drivers are used to help simplify installation.

PS/2

Make sure your computer is fully turned off and not just in standby. Insert the USB plug of n-ABLER into the supplied PS/2 adaptor and then plug it into the PS/2 socket, ensuring that the socket in question is for a mouse and not for a keyboard. This can usually be identified either because it is green (as opposed to purple for keyboard sockets) or it may be identified with a mouse symbol.

When you switch on your computer your n-ABLER automatically configures itself to PS/2 mode.

There are no driver files to load onto the computer- the computer's resident drivers are used to help simplify installation.

Getting Started

Refer to Figure 1 for an introduction to the various buttons and features of your n-ABLER.

Single Axis Button

This button is used to freeze movement in one axis allowing you to 'home in' to a position one axis at a time.

Press the button once to give left-right cursor only movement. Press it a second time to give up-down cursor only movement. Press it a third time to give scroll movement (similar to that on a 'wheel mouse'). Press it a fourth time to return to normal operation.

If the buzzer is on it emits a single beep to indicate each change of axis and the LED blinks while in single axis mode.

LED

The LED is used to show which features are active:

Green Drag Lock off
Red Drag Lock on

Blinks off briefly
(either colour)

Single Axis mode selected

Flashes Green

Learn mode

Left Mouse Button

(Red)

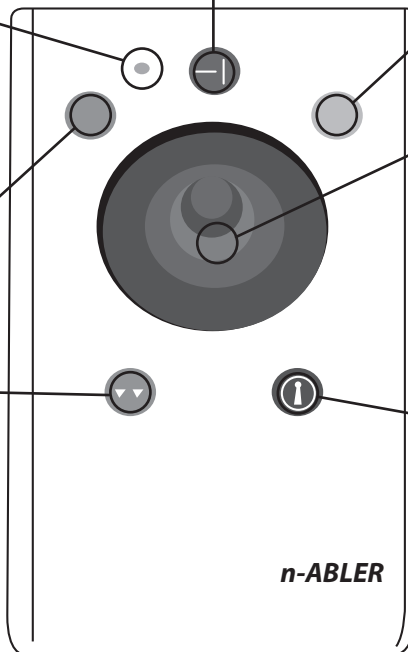
Performs exactly the same function as a mouse 'left click'

Double Click Button

(Green)

Double clicking on the Left Button can sometimes be awkward, so we've included a button to do it for you! Just press the green button once and your n-ABLER does the double click sequence automatically.

If you have decided to have the buzzer on (see Additional Features and Learn Mode) it emits a 'beep, beep' to indicate the double click has taken place.



Right Mouse Button (Yellow)

Performs exactly the same function as a mouse 'right click'

Cursor Control

Move the joystick in the direction you wish the cursor to move

The cursor speed setting affects the relationship between joystick movement and cursor speed (see top of next page).

Drag Lock Button (Blue)

When dragging an object on the screen it can sometimes be difficult moving the cursor whilst keeping the Left Button depressed. To overcome this difficulty your n-ABLER has a Drag Lock Button. Simply press this button to perform the 'dragging' operation.

When you have finished press any button to cancel.

If the buzzer is on it emits an ascending two-tone beep as the Drag Lock is turned on and a descending two-tone beep as it is turned off. Whilst the Drag Lock is on the LED turns red to give you a visual indication that Drag Lock is in operation.

Figure 1

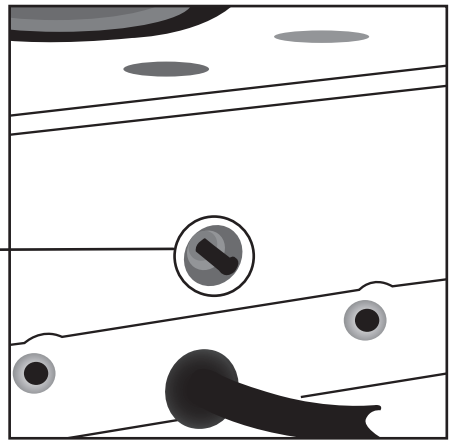
Speed Control (see Figure 2)

This button allows the cursor speed to be changed to suit your personal preferences. Press the button briefly to change the speed. There are four speed settings to choose from. Once you have reached the fastest speed, pressing the button again will return the unit to the slowest speed.

If the buzzer is enabled it emits a number of beeps to indicate the speed whenever the button is pressed. One beep indicates the slowest speed and four beeps the fastest.

Note the speed setting you have chosen is automatically retained in your n-ABLER's memory and recalled after loss of power (e.g. if the computer is turned off).

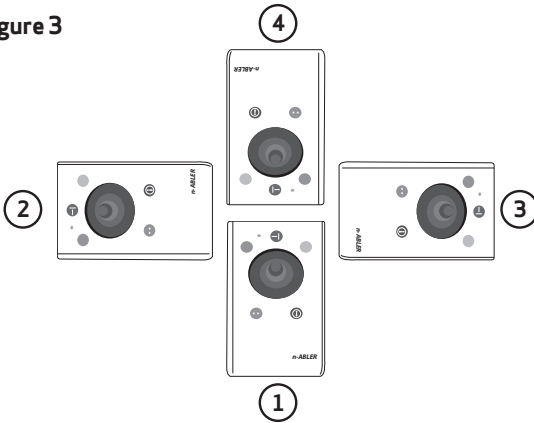
Figure 2



-
- ## Features
- **Orientation Facility** Your n-ABLER can be used in any of the positions shown in Figure 3. This, together with the option to mount your n-ABLER on a bracket, allows it to be mounted in many different ways to make using it easier. The default setting is with the computer lead furthest from you. If you prefer this you do not need to do anything. If you prefer to use it in a different position follow the steps in the Learn Mode section.
 - **Buzzer** The buzzer gives an audible indication as you select or deselect some of the features. The default setting for the buzzer is 'on' and you don't need to do anything if this is your preference. If, however, you like to work in a quiet environment and wish to have the buzzer 'off' follow the steps in the Learn Mode section.
 - **Left/Right Button Swap** If you are left-handed, or wish to use your n-ABLER 'upside down' you may wish to swap the Left and Right buttons around. If so follow the steps in the Learn Mode section.
 - **External Switches** Two sockets are provided at the rear of the unit to allow external switches to be connected. By default, the socket adjacent to the Red Button performs the same function as the Red Button, and the socket adjacent to the Yellow Button performs the same function as the Yellow Button. Suitable switches are widely available from retailers. Note that the external switches work in addition to the internal ones.
Warning: These jack sockets are not for external power supplies. Never connect an external power supply to the unit, otherwise permanent damage may occur.
 - **Dwell Click** Some users may experience difficulty in using both the n-ABLER buttons and external switches. As an alternative, the Dwell Click feature may be enabled to automatically perform a button click a short time after the cursor has stopped moving. For example, if the Double Click button is selected, an application may be started simply by moving the cursor over its icon and waiting for the selected dwell period.

Learn Mode

Figure 3



Step 1

Orientate your n-ABLER

Begin with your n-ABLER unit in the intended operating position (1,2,3 or 4 as shown in Figure 3).

Step 2

Put your n-ABLER into Learn Mode

Press the Speed Control button at the rear of the unit and keep it pressed for three seconds until you hear a 'warbling beep' to indicate your n-ABLER is in Learn Mode. The LED flashes green.

Step 3

Tell your n-ABLER which way is up

Move the joystick in the direction you want the cursor to move 'up'. There will be no immediate cursor movement but when your n-ABLER has understood your instruction it emits a single beep and the cursor moves in the direction you want.

Step 4

Enable or Disable the Buzzer

If you want the buzzer on press the Red Button once. If you want the buzzer off press the Yellow Button once.

Your n-ABLER emits a single beep to acknowledge your selection (irrespective of whether the buzzer will be 'on' or 'off').

Step 5

Select which Button is to be Left Click

If you would like the Red Button to be Left Click, press it. Otherwise press the Yellow Button.

Your n-ABLER emits a 'warbling beep' to indicate you are now leaving Learn Mode.

Your personal settings are stored in your n-ABLER's memory and will be retrieved each time the computer is powered-up.

You can quit Learn Mode at any stage by pressing and holding the Speed Control button until the unit emits a warbling beep. Any new settings will be lost. If you make a mistake simply return to Learn Mode by beginning at Step 1 and repeat the procedure.

Socket Learn Mode

Programming the Sockets on your n-ABLER

Your n-ABLER is supplied with the sockets pre-programmed as Left Click and Right Click. The sockets can be re-programmed at any time to access any of the buttons INCLUDING THE SPEED CONTROL BUTTON using the following procedure:

Step 1

Put your n-ABLER into Socket Learn Mode.

Press the Speed Control button at the rear of the unit together with the Red Button and keep both pressed for three seconds until a warbling beep is heard. The LED flashes red.

Step 2

Press the button you would like the Left Socket to function as

For example, if you want the Left Socket to function as Double Click, press the green (double-click) button once.

Your n-ABLER emits a single beep to acknowledge your selection.

Step 3

Press the button you would like the Right Socket to function as

For example, if you want the Right Socket to function as Speed Control, press the red Speed Control button (at the rear of the unit) once.

Your n-ABLER emits a 'warbling beep' to acknowledge your selection and to indicate that you are leaving Socket Learn Mode.

Your personal settings are stored in your n-ABLER's memory and will be retrieved each time the computer is powered up.

You can quit Socket Learn Mode at any stage by pressing the Speed Control Button until a 'warbling beep' is heard and the LED returns to a steady green colour. Any new settings you made will not be saved.

If you make a mistake simply return to Socket Learn Mode by beginning at Step 1 and repeat the procedure.

Dwell Click Learn Mode

Your n-ABLER is supplied with Dwell Click disabled. To enable the Dwell Click feature, use the following procedure:

Step 1

Put your n-ABLER into Dwell Click Learn Mode

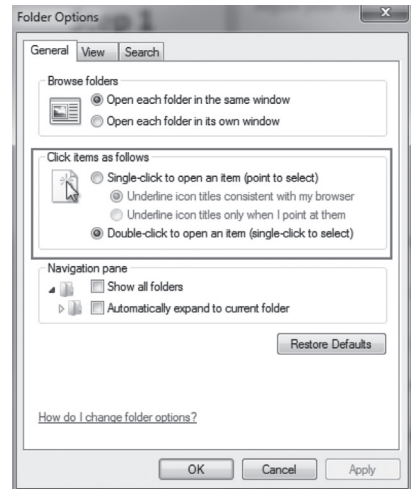
Press the Speed Control button at the rear of the unit together with the Yellow Button and keep both pressed for three seconds until a warbling beep is heard. The LED flashes orange.

Step 2

Select the Dwell Click switch function

Press the button you would like the Dwell Click function to use. For example, to perform a double click after the dwell period, press the Double Click button. Note that the Single Axis button disables the Dwell Click function and exits Dwell Click Learn Mode. n-ABLER emits a single beep to acknowledge your selection.

When choosing the switch function to use, it is useful to know that PCs running Windows have an option to allow software to launch with a single click. This can be found in Control Panel → Folder Options:



Selecting 'Single Click to open an item', Left Click can be used as the Dwell Click setting to achieve almost everything that users will require.

Step 3

Select the Dwell Click Period

Press one of the five buttons on the front of n-ABLER to select the Dwell Click Period using Table 1. The dwell click period is the time delay after the cursor was last moved after which the Dwell Click occurs. Your n-ABLER emits a warbling beep to acknowledge your selection and to indicate that you are leaving Dwell Click Learn Mode. Your personal settings are saved in non-volatile memory and are retrieved each time the unit is powered on.

You can quit Dwell Click Learn Mode at any stage by pressing and holding the Speed Control button until the unit emits a warbling beep. Any new settings will be lost. If you make a mistake simply return to Dwell Click Learn Mode beginning at Step 1 and repeat the procedure.

Button	Dwell Period
Left (Red)	1 sec
Single Axis (Black)	1.5 sec
Right (Yellow)	2 sec
Double Click (Green)	3 sec
Drag (Blue)	4 sec

Table 1- Dwell Period Settings

Maintenance

The 'n-ABLER' has no user serviceable parts. If repair is necessary the unit should be returned to Pretorian Technologies Ltd or an authorized distributor.

Warranty

The 'n-ABLER' is warranted for 24 months from the date of purchase against defects in manufacture, or component failure. The unit is designed for use in domestic, educational, commercial and light industrial applications. Use outside these areas will invalidate the warranty.

Unauthorised repair or modification, mechanical abuse, immersion in any liquid and connection to any equipment other than a host computer will invalidate the warranty.

Pretorian
TECHNOLOGIES

Unit 37 Corringham Road Industrial Estate
Gainsborough Lincolnshire DN21 1QB UK
Tel +44 (0) 1427 678990 Fax +44 (0) 1427 678992

S040117
Refers to firmware version 78 onwards.

www.pretorianuk.com
