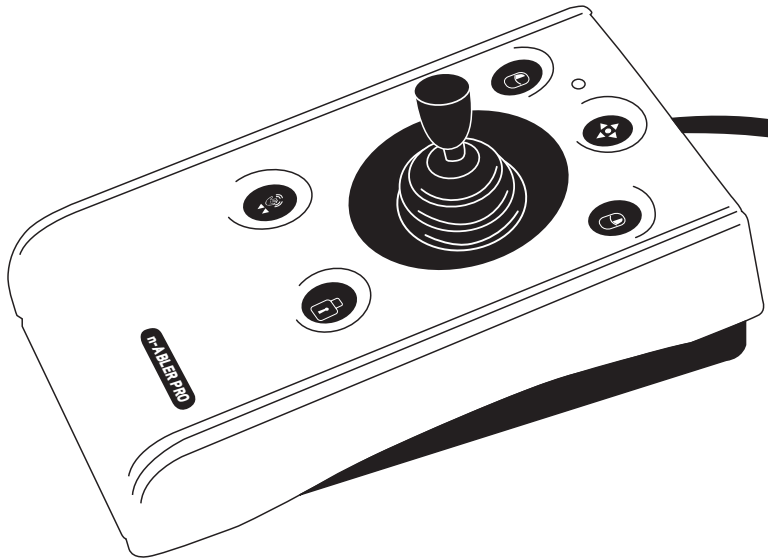


## INSTRUCTIONS

# n-ABLER PRO JOYSTICK



## Product Description

The n-ABLER PRO joystick is specifically designed for computer users with limited hand control, motor skill difficulties, poor hand-eye-coordination, limited manual dexterity, involuntary muscle spasms and hand or wrist tremors.

The n-ABLER PRO joystick is a computer mouse emulator but, with fingertip control requiring only minimal hand movement, reduces wrist and elbow fatigue. The symmetrical design allows users to work with either hand without angling

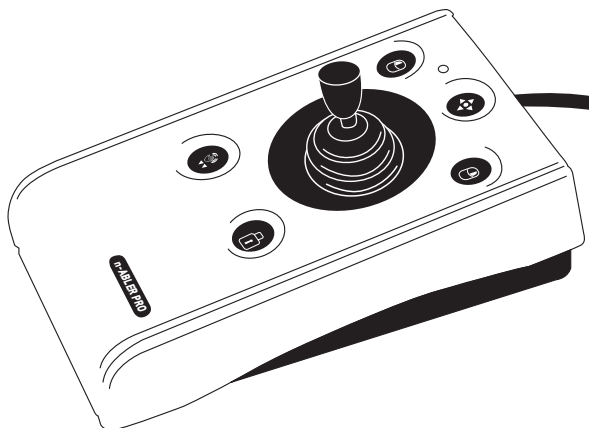
the wrist, and the unit can also be configured for 'left-handed' operation. A large, integrated, hand/palm rest makes work posture more relaxed, reducing strain and tension.

The n-ABLER PRO joystick is particularly suitable for all age groups with motor skill difficulties and for those whose work requires long periods at the computer. The 'Anti-Tremor' facility is invaluable for anyone suffering with tremors or involuntary muscle spasms and for older people with movement impairment.

## **Features**

---

- **Rugged construction and ergonomic design**
- **Large footprint for maximum stability**
- **Symmetrical design allowing use with either hand**
- **Integral wrist support to minimise fatigue**
- **Easy 'plug and play' installation (no additional drivers required)**
- **Light touch joystick for easy navigation**
- **All buttons have white legends on black backgrounds for easy identification of button functions**
- **Switchable left and right click buttons**
- **Anti-tremor button (with three settings to compensate for the degree of tremor) to improve cursor control**
- **Dwell Click function for users who cannot use buttons or switches**
- **Double click and latching drag lock buttons**
- **Pan Button to allow easy navigation of documents**
- **Audible (switchable to mute) and visual warnings indicating selection or change of function**
- **Cursor speed control**
- **Auto-detects between USB and PS/2 modes**
- **PC, Mac and Chromebook compatible**
- **Soft ball and T-Bar handles included for alternative joystick grips**



---

## Compatibility

The **n-ABLER PRO** works with USB and PS/2 compatible computers. This includes the majority of Personal Computers (PCs), Apple Macintosh computers and Chromebooks. PS/2 sockets are circular with 6 pins, whereas USB connectors are rectangular with 4 pins.

---

## Installation

### USB (Preferred connection method)

Having located an available USB socket, simply plug your **n-ABLER** into it. It doesn't matter whether the computer is on or off. The first time you install **n-ABLER** the operating system may take a few seconds to build a driver. Your **n-ABLER** is available for use as soon as its LED lights. There are no driver files to load onto the computer - the computer's resident drivers are used to help simplify installation.

### PS/2

Make sure your computer is fully turned off and not just in standby. Insert the USB plug of **n-ABLER** into the supplied PS/2 adaptor and then plug it into the PS/2 socket, ensuring that the socket in question is for a mouse and not for a keyboard. This can usually be identified either because it is green (as opposed to purple for keyboard sockets) or it may be identified with a mouse symbol.

When you switch on your computer your **n-ABLER** automatically configures itself to PS/2 mode.

There are no driver files to load onto the computer- the computer's resident drivers are used to help simplify installation.

# Getting Started

Refer to Figure 1 for an introduction to the various buttons and features of your n-ABLER PRO.

## LED

The LED is used to show which features are active:

**Green** Drag Lock off

**Red** Drag Lock on

**Orange** Anti-Tremor on

**Flashes Green** See Learn Mode

**Flashes Red** See Socket Learn Mode

**Flashing Orange** See Dwell Click Learn

## Left Mouse Button

Performs exactly the same function as a mouse 'left click'

## Double Click and Anti-Tremor Button

▼▼ **Double Click:** To activate Double Click press the button briefly.

If you have decided to have the buzzer on (see Additional Features and Learn Mode) it emits a 'beep, beep' to indicate the double click has taken place.

👏 **Anti-Tremor:** Three settings are available to compensate for the degree of user tremor.

To activate Anti-Tremor mode press, and hold, the button. The LED turns orange and the unit emits a single 'beep' indicating the Anti-Tremor mode is set at the lowest degree of compensation. To increase the level of compensation press and hold the button again until it emits 'beep', 'beep' indicating intermediate level. Press and hold the button again until it emits 'beep', 'beep', 'beep' indicating the highest degree of compensation.

Pressing and holding the button again turns off the Anti-Tremor mode denoted by a falling warbling tone and the Orange LED going off.

Note the anti-tremor setting you have selected is automatically retained in the memory and recalled after loss of power (e.g. if the computer is turned off)

## Pan Button

For ease of navigation around documents.

Press the button once to activate, press the button again to de-activate

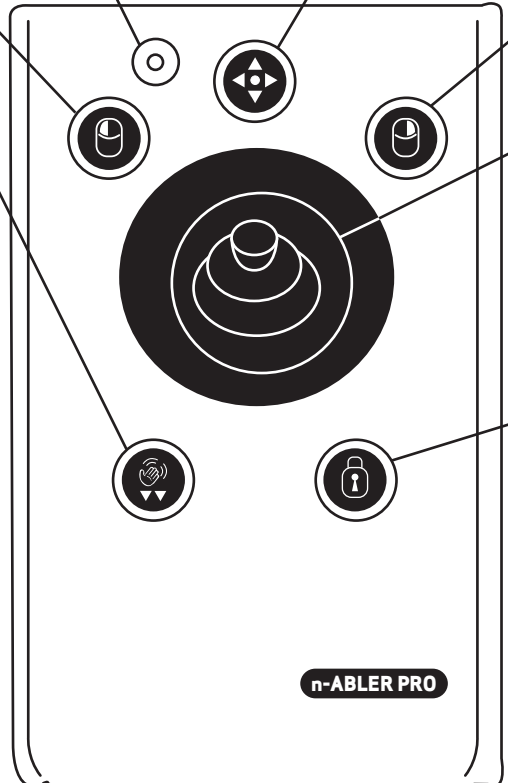
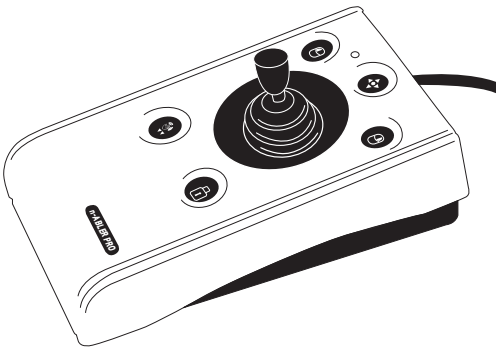


Figure 1



## Speed Control (see Figure 2)

This button allows the cursor speed to be changed to suit your personal preferences. Press the button briefly to change the speed. There are four speed settings to choose from. Once you have reached the fastest speed, pressing the button again will return the unit to the slowest speed.

If the buzzer is enabled it emits a number of beeps to indicate the speed whenever the button is pressed. One beep indicates the slowest speed and four beeps the fastest.

Note the speed setting you have chosen is automatically retained in your n-ABLER PRO's memory and recalled after loss of power (e.g. if the computer is turned off).

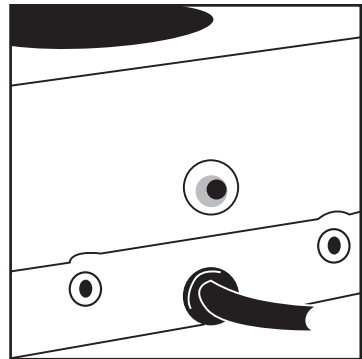


Figure 2

## Right Mouse Button

Performs exactly the same function as a mouse 'right click'

## Cursor Control

Move the joystick in the direction you wish the cursor to move.

The cursor speed setting (see figure 2) affects the relationship between joystick movement and cursor speed.

## Drag Lock Button

When dragging an object on the screen it can sometimes be difficult moving the cursor whilst keeping the Left Button depressed. To overcome this difficulty your n-ABLER PRO has a Drag Lock Button. Simply press this button to perform the 'dragging' operation. When you have finished press any button to cancel.

If the buzzer is on it emits an ascending two-tone beep as the Drag Lock is turned on and a descending two-tone beep as it is turned off. Whilst the Drag Lock is on the LED turns red to give you a visual indication that Drag Lock is in operation.

## Step 1 - Orientate your n-ABLER PRO

Begin with your n-ABLER PRO unit in the intended operating position (1,2,3 or 4 as shown in Figure 3).

## Step 2 - Put your n-ABLER PRO into Learn Mode

Press the Speed Control button at the rear of the unit and keep it pressed for three seconds until you hear a 'warbling beep' to indicate your n-ABLER is in Learn Mode. The LED flashes green.

## Step 3 - Tell your n-ABLER PRO which way is up

Move the joystick in the direction you want the cursor to move 'up'. There will be no immediate cursor movement but when your n-ABLER PRO has understood your instruction it emits a single beep and the cursor moves in the direction you want

Your n-ABLER PRO can be used in any of the positions shown in Figure 3. The default setting is with the computer lead farthest from you. This, together with the option to mount your n-ABLER PRO on a bracket, allows it to be mounted in many different ways.

## Step 4 - Enable or Disable the Buzzer

If you want the buzzer on press the Left Mouse Button once. If you want the buzzer off press the Right Mouse Button.

Your n-ABLER PRO emits a single beep to acknowledge your selection (irrespective of whether the buzzer will be 'on' or 'off').

The buzzer gives you an audible indication as you turn some of the features on and off. The default setting is 'on'. If you like to work in a quiet environment you may wish to turn the buzzer off.

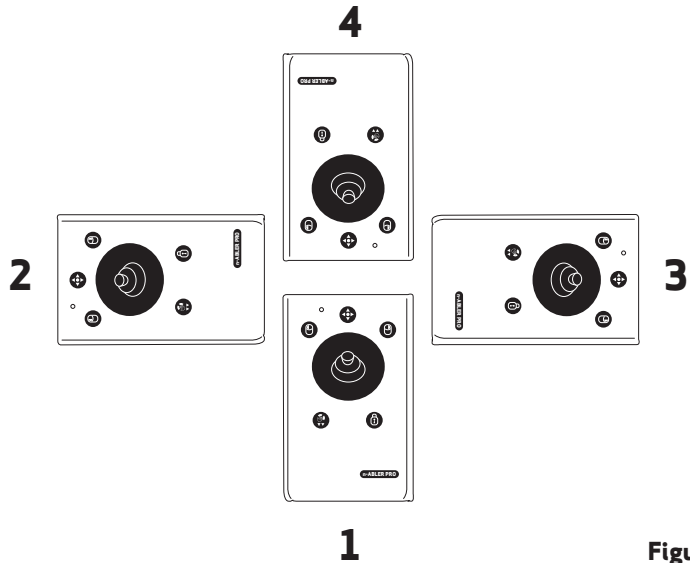


Figure 3

## Step 5 - Select which Button is to be Left Click

If you would like the Left Mouse Button to be Left Click, press it. Otherwise press the Right Mouse Button.

Your n-ABLER PRO emits a 'warbling beep' to indicate you are now leaving Learn Mode.

Your personal settings are stored in your n-ABLER PRO's memory and will be retrieved each time the computer is powered-up.

You can quit Learn Mode at any stage by pressing and holding the Speed Control button until the unit emits a warbling beep. Any new settings will be lost

If you make a mistake simply return to Learn Mode by beginning at Step 1 and repeat the procedure.

If you are left handed, or wish to use your n-ABLER PRO 'upside-down', you may wish to swap the Left and Right buttons around.

# Socket Learn Mode

---

Two sockets are provided at the rear of the unit to allow external Switches to be connected. These sockets work simultaneously with the n-ABLER PRO's own buttons.

By default, the socket adjacent to the left button performs as Left Click and the socket adjacent to the right button performs as Right Click.

The sockets can be re-programmed at any time to access any of the buttons INCLUDING THE SPEED CONTROL BUTTON using the following procedure:

## Step 1 - Put your n-ABLER PRO into Socket Learn Mode

Press the Speed Control button at the rear of the unit together with the Left Mouse Button and keep them pressed until you hear a warbling beep and the LED flashes red.

## Step 2 - Press the button you would like the Left Socket to function as

For example, if you want the Left Socket to function as Double Click, press the double-click / anti tremor) button once.

Your n-ABLER PRO emits a single beep to acknowledge your selection..

## Step 3 - Press the button you would like the Right Socket to function as

For example, if you want the Right Socket to

function as Speed Control, press the red Speed Control button (at the rear of the unit) once.

Your n-ABLER PRO emits a 'warbling beep' to acknowledge your selection and to indicate that you are leaving Socket Learn Mode.

Your personal settings are stored in your n-ABLER PRO's memory and will be retrieved each time the computer is powered up.

You can quit Socket Learn Mode at any stage by pressing the Speed Control Button until a 'warbling beep' is heard and the LED returns to a steady green colour. Any new settings you made will not be saved.

If you make a mistake simply return to Socket Learn Mode by beginning at Step 1 and repeat the procedure.

# Dwell Click Learn Mode

---

Some users may experience difficulty in pressing the buttons on n-ABLER and may also find external switches difficult. For these users, the Dwell Click feature allows the unit to be programmed to click automatically a short time after the cursor has stopped moving. This allows the user to position the cursor and then click without pressing any buttons or switches.

Your n-ABLER is supplied with Dwell Click disabled. To enable the Dwell Click feature, use the following procedure:

## Step 1

### Put your n-ABLER into Dwell Click Learn Mode

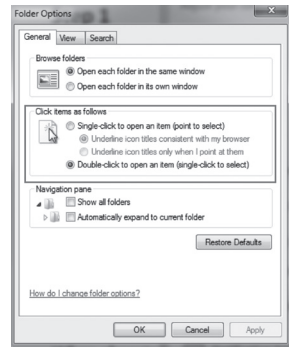
Press the Speed Control button at the rear of the unit together with the Right Mouse Button and keep both pressed for three seconds until a warbling beep is heard. The LED flashes orange.

## Step 2

### Select the Dwell Click switch function

Press the button you would like the Dwell Click function to use. For example, to perform a double click after the dwell period, press the Double Click button. Note that the Single Axis button disables the Dwell Click function and exits Dwell Click Learn Mode. n-ABLER emits a single beep to acknowledge your selection.

When choosing the switch function to use, it is useful to know that PCs running Windows have an option to allow software to launch with a single click. This can be found in Control Panel → Folder Options:



Selecting 'Single Click to open an item', Left Click can be used as the Dwell Click setting to achieve almost everything that users will require.

### Step 3 Select the Dwell Click Period

Press one of the five buttons on the front of n-ABLER to select the Dwell Click Period using Table 1. The dwell click period is the time delay between the cursor last being moved and the Dwell Click occurring. Your n-ABLER emits a warbling beep to acknowledge your selection and to indicate that you are leaving Dwell Click Learn Mode. Your personal settings are saved in non-volatile memory and are retrieved each time the unit is powered on.

Button	Dwell Period
Left	1 sec
Single Axis	1.5 sec
Right	2 sec
Double Click	3 sec
Drag	4 sec

Table 1- Dwell Period Settings

You can quit Dwell Click Learn Mode at any stage by pressing and holding the Speed Control button until the unit emits a warbling beep. Any new settings will be lost. If you make a mistake simply return to Dwell Click Learn Mode beginning at Step 1 and repeat the procedure.

## Maintenance

The 'n-ABLER PRO' has no user serviceable parts. If repair is necessary the unit should be returned to Pretorian Technologies Ltd or an authorized distributor.

## Warranty

The 'n-ABLER PRO' is warranted for 24 months from the date of purchase against defects in manufacture, or component failure. The unit is designed for use in domestic, educational, commercial and light industrial applications. Use outside these areas will invalidate the warranty. Unauthorised repair or modification, mechanical abuse, immersion in any liquid and connection to any equipment other than a host computer will invalidate the warranty.



**Pretorian**  
TECHNOLOGIES

Unit 37 Corringham Road Industrial Estate  
Gainsborough Lincolnshire DN21 1QB UK  
Tel +44 (0) 1427 678990 Fax +44 (0) 1427 678992